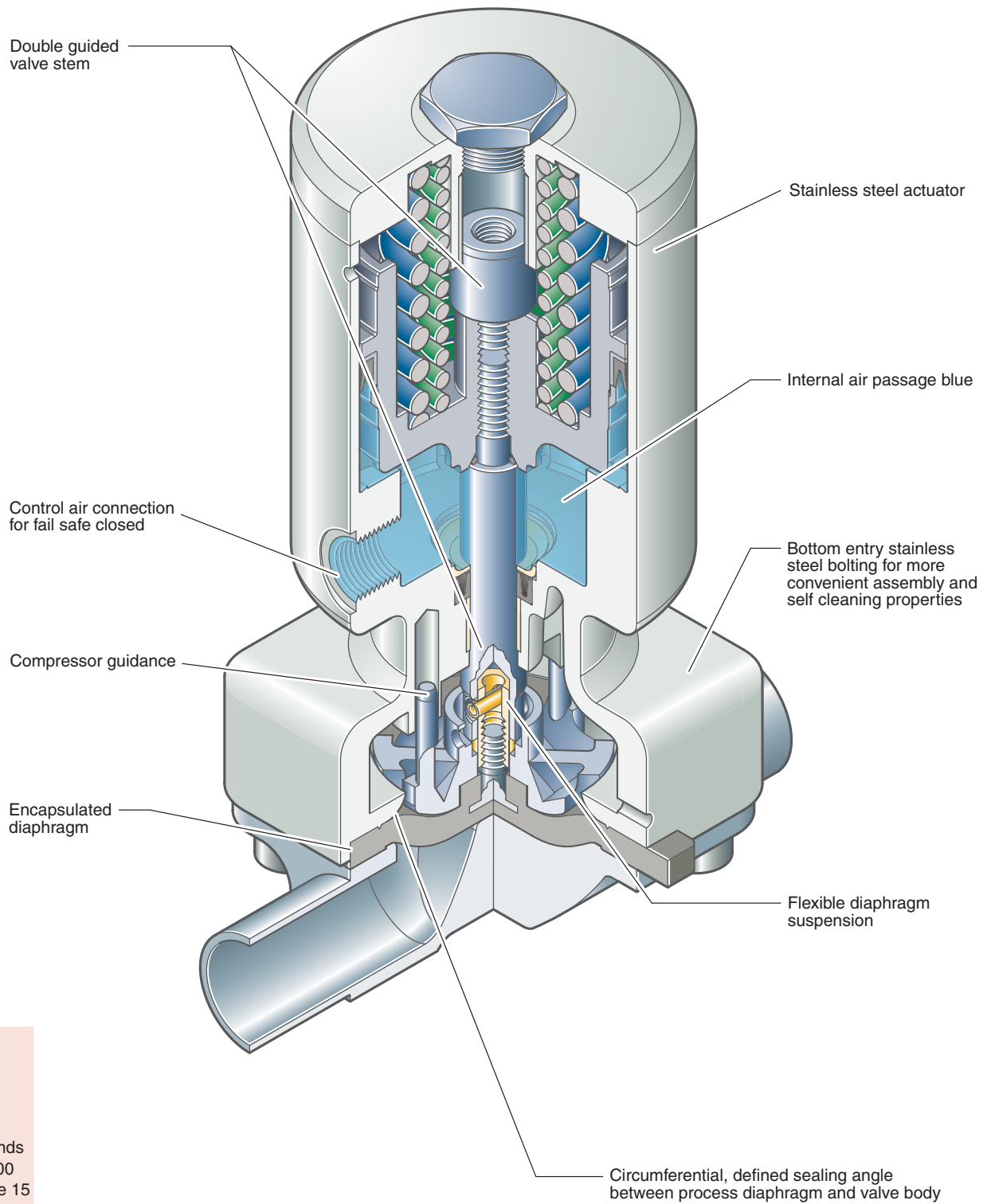


Steripur 407

Pneumatically Operated Valve DN 15 - 100 mm (1/2" - 4")



Butt weld ends
MA 25 - 100
Fold out page 15

Steripur 407

Pneumatically Operated Valve DN 15 - 100 mm (1/2" - 4")



DN 15 - 50 Cf. 4

Features

- High cycle piston stainless steel actuator
- Compact design, the outside diameter of the actuator is the same size as the bonnet flange
- Advantages in multiport bodies and manifold valve assemblies
- Control air connection in flow direction
- Circumferential, defined sealing angle between process diaphragm and valve body
- Flexible diaphragm suspension
- Encapsulated diaphragm
- Clean and polished exterior design ideal for sterile wash downs

Optional

- Available with a wide range of control equipment and accessories see page 59 to 64, also for retrofitting
- Control air connection 90° to flow direction
- Autoclavable

Technical Data

Control function (Cf.): Pneumatically operated
 Fail safe close (NC): Cf. 1 & 4
 Fail safe open (NO): Cf. 2 & 5
 Double acting (DA): Cf. 3 & 6

Direction

Control connection: At Cf. 4, 5 & 6, in flow direction, standard
 At Cf. 1, 2 & 3, 90° to flow direction

Max. working pressure: Unidirectional (delta p = 100%)

Diaphragm	DN 15-50 (2")	DN 65-80 (2,5"-3")	DN 100 (4")
EPDM	10 bar (150 psi)	7 bar (100 psi)	6 bar (90 psi)
PTFE	8 bar (120 psi)	6 bar (90 psi)	5 bar (75 psi)

Higher working pressure may be achieved with different actuator. Please consult a SED factory representative for working pressure above the indicated maximum.

Max. working temperature: 175°C (350°F) dependent on application

Control pressure:
 Cf. 1 & 4 DN 15-80 5 - 8 bar(70-120 psi)
 Cf. 1 & 4 DN 100 6 - 8 bar(90-120 psi)
 Cf. 2, 3, 5 & 6 DN 15-80 4,5-6 bar(65-90 psi)
 Cf. 2, 3, 5 & 6 DN 100 5,5-7 bar(80-100 psi)

Diaphragm material: EPDM or PTFE

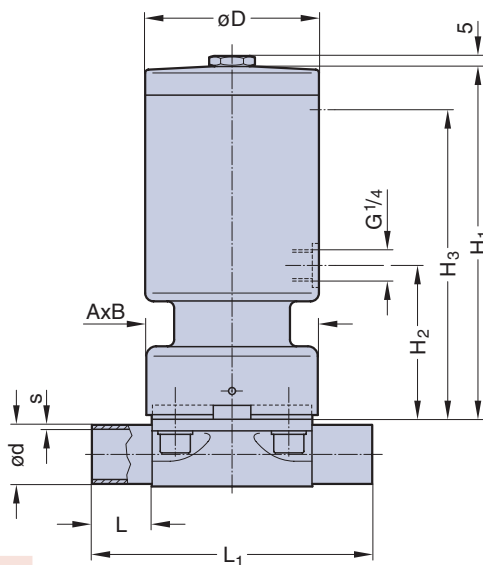
Valve body material: Forged 1.4435/ 316 L ASME/BPE
 Investment cast 1.4435/ 316 L
 Other alloys

End connection: Butt weld ends see fold out page 15
 Clamps and flanges see page 16 and 17
 Special ends

Actuators suitable for: Two-Way bodies
 Welded configurations
 T-bodies
 Multiport bodies
 Tank bottom bodies

Flow rate: Kv in m³/h (Cv in GPM) see page 9

Diaphragm size: MA see table below



DN 15 - 50

Butt weld ends
 MA 25 - 100
 Fold out page 15

DN (mm)	Dimensions (mm)							
	MA	L	L ₁	A x B	H ₁	H ₂	H ₃	D
15-25	25	25	120	73x79	151	66	133	75
32-40	40	25	153	96x105	180	75	160	105
50	50	30	173	111x130	216	77	180	105
65	80	30	216	190x170	309	135	285	175
80	80	30	254	190x170	309	135	285	175
100	100	30	305	ø238	318	143	295	175